



## Product Datasheet

### SUMO Protease (ULP1), His Tag

<b>Catalog Number</b>	AP0006
<b>Species</b>	Saccharomyces cerevisiae
<b>Expression System</b>	E. coli
<b>Molecular Weight</b>	27.8 kDa
<b>Purity</b>	> 95 % as determined by SDS-PAGE
<b>Formulation</b>	Liquid
<b>Tag</b>	6x His tag at N-term
<b>Biological Activity</b>	Cleavage efficiency depends on the distance between the SUMO tag and the protein. Generally, a 1:200 ratio with one-hour incubation at room temperature achieves >99% SUMO tag cleavage.
<b>Formulation</b>	50% Glycerol, 5 mM DTT, 150 mM NaCl, 20 mM Tris pH7.8
<b>Storage Condition</b>	Store at -20°C for 2 years, or at 2-8°C for up to 1 week. Avoid repeated freeze/thaw cycles.
<b>Unit Definition</b>	One unit of SUMO Protease (ULP1) cleaves > 90% of 2 µg control substrate at 30°C for 1 h.

Apical Lab Corporation

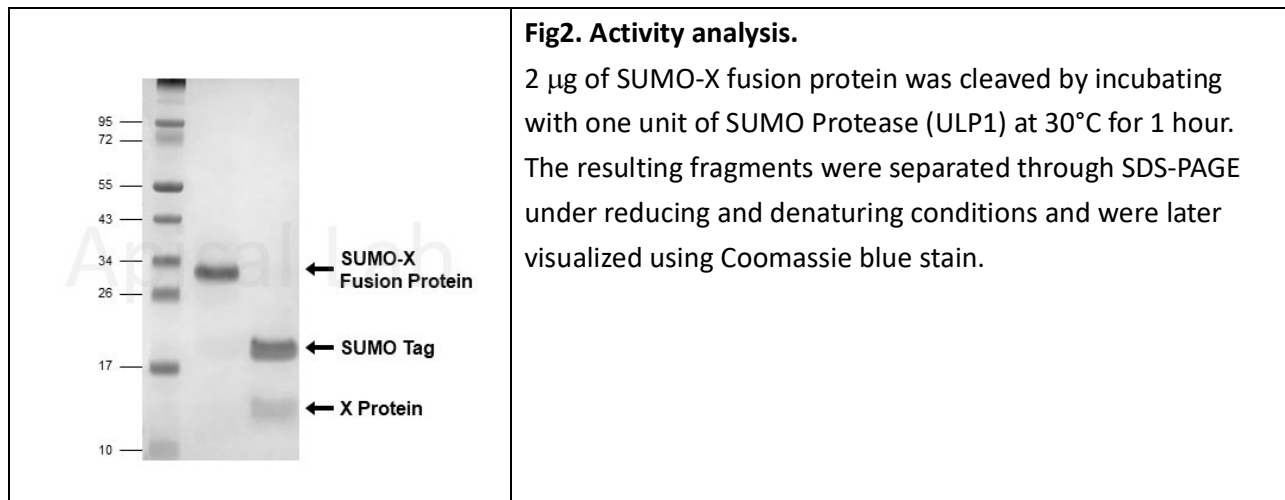
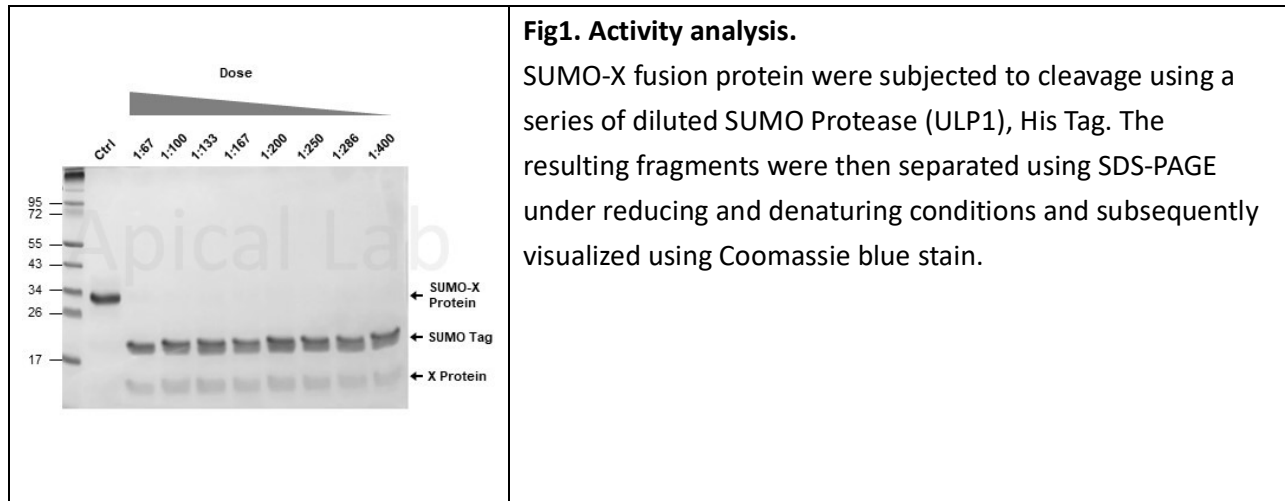
03-5160051

info@apicallab.com

206A, No. 101, Sec. 2, Guangfu Rd., East Dist., Hsinchu City 300, Taiwan



## Data Image



Apical Lab Corporation

03-5160051

info@apicallab.com

206A, No. 101, Sec. 2, Guangfu Rd., East Dist., Hsinchu City 300, Taiwan